

Shrinking-Cities South/North

Research Seminar | 14 & 15 JULY 2008 | FSU, Tallahassee, FL. 1

The Department of Urban and Regional Planning at Florida State University

Welcomes you to this research seminar which aims to understand and examine urban decline beyond classical perspectives focused on affluent nations.

With the emergence of newly industrializing economies, urban decline—associated with deindustrialization—has been a major factor afflicting cities of affluent countries. However, the fate and fortune of cities in newly industrializing nations have not been immune to the vagaries of new waves of economic restructuring associated with rapid technological change and capital mobility.

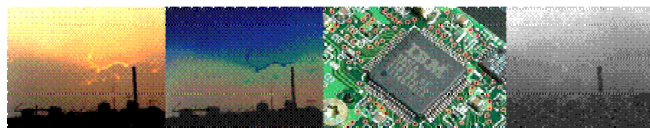
The so-called post-industrial tendency of industries and services to “move up” the technological ladder and “move out” to lower cost locations has affected Latin American cities since the 1980s. As destinations of outsourced production from affluent nations, Latin American cities have recently experienced the “moving out” (without the moving up) of manufacturing to China, the world’s second largest economy and the preferred destination for much of the world’s manufacturing shift from the Atlantic to the Pacific Rim.

Large Latin American cities from Mexico to Brazil have experienced peripheral dispersion of manufacturing along with inner city population loss and urban decline. The newly industrializing subcenters in the metropolitan periphery are the sites for new industrial investment, but they are also the most vulnerable sites to international capital flight to Asia. In this sense, driven by global economic processes, Latin American cities appear to be converging with Northern cities and experiencing similar trends in urban growth and decline.

This two-day miniconference gathers scholars from Latin American universities and from the Shrinking Cities International Research Network (SCiRN) to exchange ideas and research on these issues with an eye on building a publishable journal symposium or book and a fundable research agenda.

Thank you for participating. Your presence and contributions are the key to making this a successful and productive meeting.

Ivonne Audirac, Bruce Stiftel, and Harrison Higgins
Department of Urban and Regional Planning
College of Social Sciences
Florida State University



Shrinking-Cities South/North

Research Seminar | 14 & 15 JULY 2008 | FSU, Tallahassee, FL. 2

Venue*: DeVoe Moore Center, First Floor Bellamy Building, Room 150

Monday July 14

8:30 am **Continental Breakfast**

9:30 **Welcome and Symposium Overview**

David Rasmussen, Dean, College of Social Sciences, Florida State University
Tim Chapin, Chair, Department of Urban and Regional Planning, Florida State University.

Introduction – Ivonne Audirac, Bruce Stiftel, and Harrison Higgins,
Department of Urban and Regional Planning, Florida State University.

10:00 **Deindustrialisation, economic restructuring and innovation processes in European and Australian shrinking cities.**

Cristina Martinez Fernandez, University of Western Sydney, Australia
Sylvie Fol, University of Paris 1 Panthéon, Sorbonne, France
Emmanuele Cunningham-Sabot, University of Rennes 2, France.

Inequality, urban shrinkage and urban policies in Brazil.

Sergio Torres Moraes, Itajaí Valley University in Santa Catarina, Brazil.

11:00 **Discussion.** “Shrinking” metaphor or research construct? Equally applicable in S & N ?

12:00 **Lunch**

1:30 **The shrinking of first generation suburbs in Mexico City: the case of Naucalpan, Estado de Mexico.**

Sergio Flores Peña, Urbanism, UNAM Autonomous National University of Mexico.

Depopulation of small and medium size cities in West Central Mexico.

Jesús Arroyo Alejandro and José Manuel Arroyo Sanchez, University Center of Economic and Managerial Sciences (CUCEA), Universidad de Guadalajara.

2:30 **Break**

2:45 **Environmental and economic development shrinkage of Atenquique, Jalisco, Mexico.**

José Vargas-Hernandez University Center of Economic and Managerial Sciences (CUCEA), Universidad de Guadalajara.

3:15 **Discussion.** Understanding shrinking processes S/N: causes, manifestations, differences and similarities. What is the role of planning?

5:00 **Adjourn**

6:30 Dinner Off-Campus, (TBA)

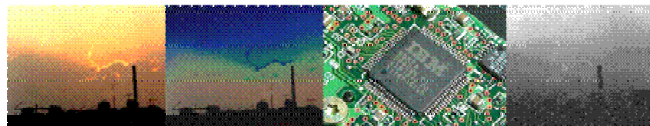
Shrinking-Cities South/North

Research Seminar | 14 & 15 JULY 2008 | FSU, Tallahassee, FL. 3

Venue*: DeVoe Moore Center, First Floor Bellamy Building, Room 150

Tuesday July 15

- 8:00 **Continental Breakfast**
- 9:00 **Changing flows and the tertiary city: Panama City and its urban transformation.**
Ariel Espino, Oficina del Casco Viejo-Ministry of the Presidency, Panama City, Panama.
- Facing China's competitiveness. The case of Western Mexico's electronics industry.**
Raquel Partida Rocha, Universidad de Guadalajara, Los Altos Campus.
- 10:00 Break
- 10:15 **Guadalajara's shrinking "Silicon Valley": Latin American deindustrialization in the latest global shift.**
Ivonne Audirac, Urban and Regional Planning, Florida State University.
- 10:45 **Wrap up Discussion.**The future of shrinking city research and planning pedagogy in the S/N. Where do we go from here?
- 12:15 **Adjourn**
- 12:30 Lunch



* Campus, downtown and area maps on pages 9 and 10.

Shrinking-Cities South/North

Research Seminar | 14 & 15 JULY 2008 | FSU, Tallahassee, FL. 4

Abstracts

Deindustrialisation, economic restructuring and innovation processes in European and Australian shrinking cities.

Cristina Martinez Fernandez, University of Western Sydney, Australia

Sylvie Fol, University of Paris 1 Panthéon, Sorbonne, France

Emmanuele Cunningham-Sabot, University of Rennes 2, France.

The paper examines examples of cities in France, the UK, Germany, Poland and Australia where the effects of deindustrialisation can be noted in a particularly profound, in some cases irreversible, way. The paper discusses new urban strategies to deal with shrinkage in these cities and further elaborates on the possible converging of these cities with similar examples from Latin America.

Inequality, urban shrinkage and urban policies in Brazil

Sergio Torres Moraes, Itajaí Valley University in Santa Catarina, Brazil.

The territorial dynamics of Brazilian cities cannot be understood without considering their enormous socio-economic inequality. In Brazil, the problem of urban shrinkage does not follow the patterns found in Europe or the United States. A strong decline in birthrates since the 1980s, and industrial relocation due to changes in economic and transportation policies and the relatively high mobility of the elite within the metropolis might be the causes of the incidence of large amounts of idle land within the major Brazilian metropolis.

The shrinking of first generation suburbs in Mexico City: the case of Naucalpan, Estado de Mexico.

Sergio Flores Peña, Urbanism, UNAM Autonomous National University of Mexico.

Naucalpan, Estado de Mexico, is a municipality located in the north-western edge of the Federal District (DF) in Mexico City. In the 60's and 70's it flourished as a booming industrial town and home of new middle to high class residential areas. It also became the most industrialized municipality of the country surpassing Guadalajara and Monterrey. The picture changed in the 1980's when an aging industry not well fitted to compete with international players, the expansion of the services economy and a relative relocation within the city, produced signs of population decline that continued until these days.

Depopulation of small and medium size cities in West Central Mexico

Jesús Arroyo- Alejandro and Jose Manuel Arroyo-Sanchez University Center of Economic and Managerial Sciences (CUCEA), Universidad de Guadalajara.

Out migration to the U.S., from small and medium size cities in West Central Mexico, is bound to increase due to the accelerated openness of the Mexican economy and market oriented policies, which have transformed patterns of regional development. Cities win or lose economic opportunities during the rapid growth of imports and exports, and losers experience depopulation and shrinkage.

Environmental and economic development shrinkage of Atenquique, Jalisco, Mexico.

José Vargas-Hernandez, University Center of Economic and Managerial Sciences (CUCEA), Universidad de Guadalajara

After the Company's paper mill was privatized, the town started declining and shrinking in population, social and economic development, with disastrous environmental repercussions. The impact on the environmental and economic development affected the shrinking and declining of Atenquique and also of the surrounding cities and towns.

Changing flows and the tertiary city. Panama City and its urban transformation.

Ariel Espino, Oficina del Casco Viejo-Ministry of the Presidency, Panama City, Panama

Shrinking-Cities South/North

Research Seminar | 14 & 15 JULY 2008 | FSU, Tallahassee, FL. 5

Weakly dependent on industrial production, Panama's economy is rather crucially linked to the direction of international commercial flows and global tourism trends. Social exclusion and segregation are related to marginalization and gentrification processes rather than job loss, as the central city reinvents itself as an international destination for leisure and trade. The case of Panama City illustrates well the looming dangers (and possibilities) that current global processes imply for cities betting on services for the new patterns of global economic shifts.

Facing China's competitiveness. The case of Western Mexico's electronics industry.

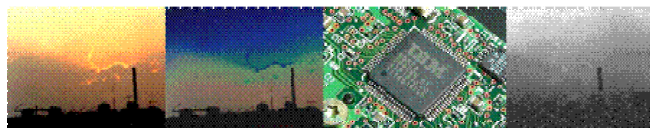
Raquel Partida Rocha, Universidad de Guadalajara, Los Altos Campus.

This paper discusses regional economic transformations related to the electronics industry in West Mexico. The industry has been negatively affected by China's global presence in electronics manufacturing and trade, and without a doubt, it has also generated changes in Guadalajara's Metropolitan region. Reindustrialization of the existing industrial base in search for new forms of economic development is one such change, which as a competitive response to China's challenge, has resulted in regional economic transformations. The aim of the paper is to show how these changes have unfolded in both industrial and labor contexts.

Guadalajara's shrinking silicon valley: Latin American deindustrialization in the latest global shift

Ivonne Audirac, Urban and Regional Planning, Florida State University

Guadalajara, Mexico's Silicon Valley took shape as an important electronics industrial cluster from 1995 to 2000 (Audirac 2003). However, by 2001, partly as a result of China's accession to the WTO and the relocation of American electronic plants from Mexico to China, the industry contracted more than 50% in one year (Gonzalez and Sanchez 2006). This shrinkage took place primarily in Guadalajara's industrial suburbs and metropolitan periphery severely affecting the local and state economy and the lives of many displaced workers, most of them women.



Shrinking-Cities South/North

Research Seminar | 14 & 15 JULY 2008 | FSU, Tallahassee, FL. 6

Authors

J. Jesús Arroyo-Alejandre is research professor and President of the University Center of Economic and Managerial Science (CUCEA) of the University of Guadalajara, Mexico. He holds graduate degrees in Urban and Regional Planning from the London School of Economics and a PhD in Regional Economics from Cornell University. He was founding director of the Institute of Economic and Regional Studies (INESER) and of the graduate program in Economic and Managerial Sciences of the University of Guadalajara. Dr. Arroyo's scientific and academic contributions have been recognized by the Mexican National Council of Science and Technology (CONACYT). He held the Simon Bolivar Chair at the Sorbonne-Paris 3 in 1999 and has been a visiting scholar at UCLA. He is executive vice president of the International Consortium for Studies about Mexico (PROFMEX). He has authored and edited more than 31 books dealing with economic impacts of migration, urban decentralization, regional development, and public policy. His most recent book is *Rural Abandonment: An Explanatory Model of Rural Emigration Among Workers in Western Mexico*.

José Manuel Arroyo-Sánchez is currently a professor at the Department of Economics of the Universidad de Guadalajara's University Center of Economic and Managerial Sciences (CUCEA). He also heads the International Business undergraduate program of CUCEA's Business School. Manuel Arroyo's research interests span various subjects within the social sciences and business: competitiveness, taxation, the public sector and international migration. In 2007, he led a team of researchers to complete the first study on excise tax evasion in Mexico for the Mexican taxation authority. In the field of migration studies he has collaborated extensively with Jesús Arroyo Alejandre, a renowned scholar who has been studying international migration in the western region of Mexico for many years. In the field of migration, his interests are: migration and its relation to human capital, and the effects of Mexico-US migration in Mexico's socio-economic development. Manuel Arroyo did his undergraduate studies in the field of Economics at the Universidad de Guadalajara (Mexico), and his graduate studies in the field of economics and history at UCLA (USA) and the University of Essex (UK).

Ivonne Audirac is Associate Professor in the Department of Urban and Regional Planning at Florida State University in Tallahassee, FL. She holds degrees in architecture, international development, urban planning and sociology. Dr. Audirac's research has focused on social aspects of urban design and urban form, growth management, sustainable development and the influence of technological change on urban and metropolitan form. Her research has been published in refereed journals including the *Journal of the American Planning Association*, *Journal of Planning Education and Research*, the *Journal of Planning Literature*, *International Regional Science Review*, and *Transportation Research Board*. She is editor of *Rural Sustainable Development in America*, published by John Wiley. Audirac is a founding member and PhD Academy Coordinator of the Shrinking Cities International Research Network (SCiRN) a research consortium hosted by the IURD at the University of California, Berkeley, involving more than 50 researchers and PhD students from around the globe.

Emmanuèle Cunningham-Sabot is an Associate Professor of Urban Planning at the University of Rennes 2, France, where she teaches Globalisation and Urban Economics. She was a Research Fellow associate in the Geography department of the University of Glasgow, having been awarded a research grant by the Royal Society of Edinburgh. She was also a Research Fellow in the Geography department of the University of Strathclyde Glasgow, UK) funded by an award "Training and Mobility of Researchers, Marie Curie Fellowship", through the European Union. In 2006, the French Research National Agency (ANR) awarded her a "Young Researcher Project" entitled "Shrinking Cities" which she is carrying out in collaboration with Sylvie Fol and H el ene Roth. Emmanu el e's expertise is in urban regeneration (governance, policies, practices and effects), specifically in old industrial "shrinking" cities. She has a PhD in Urban Planning, her doctoral work which has been published, compares the urban regeneration of two industrial regions, Glasgow region (economy, image) with that of Saint-Etienne (France). She holds two M.S.C.s from the University of Lyon, one in urban planning and one in Economics. She also contributed to different European projects related to governance and polycentrism.

Shrinking-Cities South/North

Research Seminar | 14 & 15 JULY 2008 | FSU, Tallahassee, FL. 7

Ariel Espino is director of the Oficina del Casco Viejo-Ministry of the Presidency, Panama City, Panama. He holds a PhD in Anthropology from Rice University, a Master of Science in Planning from the University of Arizona, and a Bachelor of Architecture from Universidad Santa Maria La Antigua (Rep. of Panama). He has more than 10 years of experience in planning, design, and public involvement.

Sergio Flores Peña is chair of the Urbanism Program, School of Architecture, at UNAM Autonomous National University of Mexico. He holds graduate degrees in City and Regional Planning from the University of California at Berkeley. He served as president of the Latin American Association of Schools of Planning and Urbanism (ALEUP) and was charged with hosting the 2nd Planning Schools World Congress in 2006 in Mexico City. He is a representative at the Global Planning Associations Network (GPEAN) and chair of the Local Organizing Committee for the Global Planning Educators Interest Group (GPEIG). He has authored and coauthored numerous journal publications in the areas of transportation and land use, disaster prevention, and cadastral reform.

Sylvie Fol is Professor of Urban Planning at the University of Paris 1 Panthéon – Sorbonne and a member of Géographie-Cités, a Research Centre specialized in Geography and Urban Planning. She holds a PhD in Urban Studies from the Ecole des Hautes Etudes en Sciences Sociales (Paris). Her research focuses on the manifestations and effects of socio-spatial inequalities and analyses the strategies that are put in place to tackle social exclusion and segregation. She has been studying the mobility patterns and practices of low-income people and contributed to different research projects comparing transportations policies for the poor in the US, Great Britain and France. In France, Sylvie's research focuses on the suburbs of the Paris region and aims at understanding the effects of globalisation and metropolisation processes on the socio-spatial evolution of the first suburban ring, the so-called "red belt" of Paris. These suburbs have been strongly affected by urban decline and constitute an interesting example of "Shrinking Cities". She has been part of a project (2003-2007) focusing on the link between urban, local economic development and skill improvement strategies in different suburban cities particularly affected by urban and economic decline.

Harrison T. Higgins is Associate Scholar and Planner in Residence, in the Department of Urban and Regional Planning at Florida State University. He is an urban designer and planner with more than 15 years experience. Most recently he was the Chief Operating Officer of Planning Technologies in Albuquerque, New Mexico and President of the New Mexico chapter of the APA. Mr. Higgins is also a former adjunct member of the faculty of the City College of New York and an instructor at UCLA and SCI-Arc. His work has been published in *Planning*, *Lotus*, and *Offramp*, by the Princeton University Press and in the *Los Angeles Times*; and he has presented papers at numerous conferences and symposia.

Cristina Martinez-Fernandez is an Associate Professor at the University of Western Sydney. She is currently working as a policy analyst at the OECD Centre for Entrepreneurship, SMEs and Local Economic Development 'LEED' program (Paris) where she is investigating policy implications of skills and development strategies in SMEs as it regards the transition of labour force into the knowledge economy. Dr Martinez-Fernandez leads the research program on Urban and Regional Dynamics at the Urban Research Centre, UWS, which include the study of processes of growth and shrinkage, and policies and strategies that influence these processes and outcomes. She Co-Chairs the Shrinking Cities International Research Network (SCiRN), a research consortium hosted by the IURD at the University of California, Berkeley, involving more than 50 researchers and PhD students from around the globe. She is also an invited Professor to the Institute of Geography, University Paris. Cristina has published more than 80 journal papers, research reports and book chapters.

Sergio Moraes is an architect and urban planner in Brazil. He is an Assistant Professor of Urban Planning at Itajaí Valley University in Santa Catarina, Brazil, where he teaches Urban Policy, City Planning and Urban Design. He has been a Visiting Scholar at the Institute of Urban and Regional Research at the

Shrinking-Cities South/North

Research Seminar | 14 & 15 JULY 2008 | FSU, Tallahassee, FL. 8

University of California in Berkeley where he conducted research related to the role of regional land use planning in transportation corridor development in Brazil. Sergio is a member of the Shrinking Cities International Research Network.

Raquel Edith Partida Rocha is Professor and Director of the Social Studies Division at the Universidad de Guadalajara, Los Altos Campus in México and a scientific and academic recognized evaluator, of the Mexican National Council of Science and Technology (CONACYT). She has authored and edited numerous books and journal articles on the subject of labor, labor unions, and the electronics industry. She teaches graduate courses in regional development and research methodology and is a member of the Mexican Academy of Sciences and of several international associations. Her current research includes migration, employment and gender.

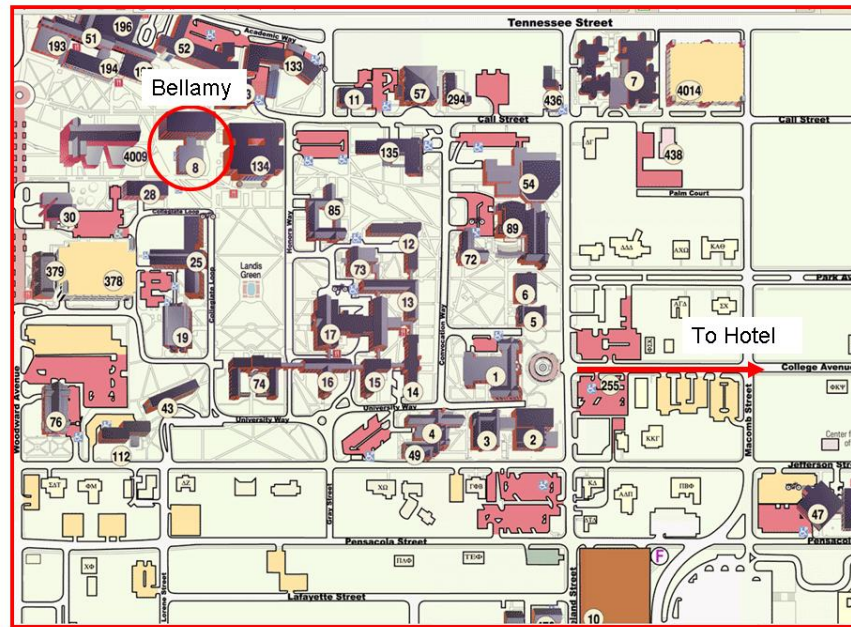
Bruce Stiftel is Professor and Associate Dean of Graduate Studies at Florida State University. Stiftel studies collaborative processes in environmental planning and policy. Currently, he is examining planners' power as exercised in local land use permitting and development control in the United States and the United Kingdom. Stiftel is editor (with Vanessa Watson and Henri Acselrad) of the book series Dialogues in Urban and Regional Planning; editor (with John T. Scholz) of Adaptive Governance and Water Conflict; reviews editor of Planning Theory, and Chair of the Association of Collegiate School of Planning's Committee on the Academy and the Profession. In 2004, he was inducted into the College of Fellows of the American Institute of Certified Planners.

José Vargas-Hernandez holds an MBA, a first Ph.D. in Organizational Economics, and a second one in Public Management. A member of the National System of Researchers in Mexico, he works as a Research Professor for the National System of Technological Institutes and for the University Center of Economic and Managerial Sciences (CUCEA) of the University of Guadalajara His line of research has been in Organizational Economics. Presently he works on the project "Co-Operation and Conflict between Firms, New Social Movements and Government in a Post-Industrial Society (USA) and a Less-Developed Country (Mexico): a Cross-Cultural Research." He has broad experience in the private and public sectors. He teaches in the Doctoral Programs of Management, Public Policy, and Public Management. Jose is a member of the Shrinking Cities International Research Network.



Shrinking-Cities South/North

Research Seminar | 14 & 15 JULY 2008 | FSU, Tallahassee, FL. 9

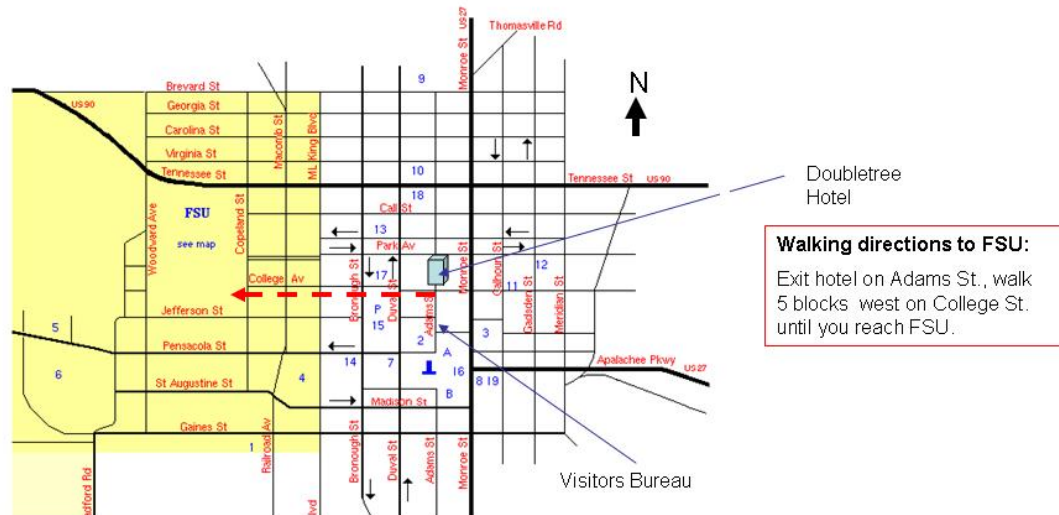


Bellamy Building on FSU Campus

Downtown Tallahassee, Florida

Points of Interest

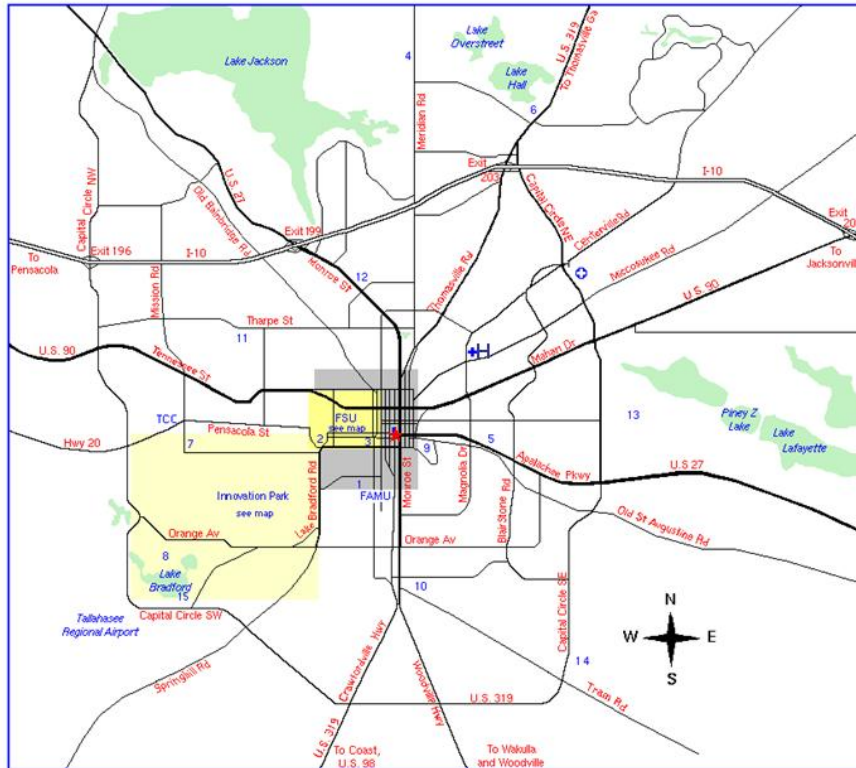
- | | | |
|--|----------------------------|--------------------------------------|
| 1 State Capitol | 4 Civic Center | 12 Lemoyne Art Gallery |
| A House Office Building | 5 Dick Howser Stadium | 13 Leroy Collins Public Library |
| B Senate Office Building | 6 Doak Campbell Stadium | 14 Museum of Florida History |
| FAMU Florida A&M University | 7 Florida Supreme Court | 16 Old Capitol Museum |
| FSU Florida State University (Map) | 8 Florida Vietnam Memorial | 17 Post Office |
| IP Innovation Park (Map) | 9 Governor's Mansion | 18 C.K. Steele City Bus Terminal |
| 1 Amtrak Station | 10 Greyhound Bus Station | 19 Union Bank Museum |
| 2 City Hall | 15 Kleman Plaza | P Public Parking |
| 3 Leon County Courthouse | 11 Knott House Museum | Tallahassee Area Map |



Shrinking-Cities South/North

Research Seminar | 14 & 15 JULY 2008 | FSU, Tallahassee, FL.

10



Tallahassee, Florida. Area Map

Points of Interest

- ★ Capitol Building
- 1 Bragg Stadium (FAMU)
- 2 Doak Campbell Stadium
- 3 Civic Center
- 4 Forest Meadows Park
- 5 Governor's Square Mall
- 6 Maclay Gardens
- 7 Messer Park
- 8 Museum of History and Natural Science
- 9 Myers Park
- 10 Fairgrounds, Capital Stadium
- 11 San Luis Mission Archeological and Historic Site
- 12 Tallahassee Mall
- 13 Tom Brown Park
- 14 Capital Circle State Office Complex
- FAMU Florida A&M University
- TCC Tallahassee Community College
- FSU Florida State University
- H Tallahassee Community Hospital
- H Tallahassee Memorial Regional Medical Center 15
- FSU Reservation

If this is your first time in Tallahassee and you would like to visit some local attractions while on your own, Tallahassee's Visitors Bureau is an excellent source of on-line information at:

http://www.visittallahassee.com/things_to_see/attractions/things_to_do/ The Visitors Bureau is also located around the corner from the Doubletree hotel at: 106 E Jefferson Street. Phone: (850) 606-2305 (800) 628-2866.